

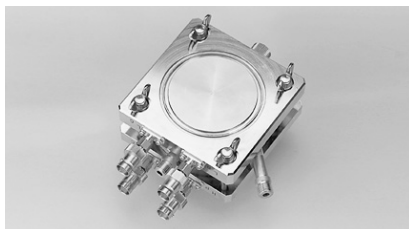
## Test Fixtures and Accessories (Four-Terminal-Pair)

### Material measurements



16451B dielectric test fixture

Measurement parameters:  
capacitance (C), dissipation factor (D),  
and dielectric constant ( $\epsilon_r'$ ,  $\epsilon_r''$ )  
Material-under-test size:  
thickness:  $\leq 10$  mm  
diameter: 10 to 56 mm  
Frequency:  $\leq 30$  MHz



16452A liquid test fixture

Measurement parameter:  
capacitance (C), dielectric constant  
( $\epsilon_r'$ ,  $\epsilon_r''$ ) Liquid sample  
Quantity:  $\leq 6.8$  ml  
Frequency: 20 Hz to 30 MHz

### Others

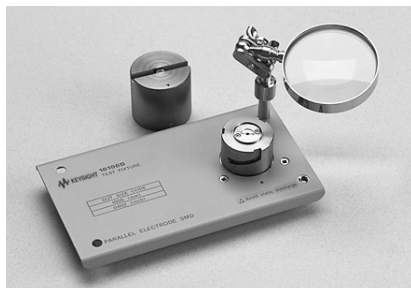


42941A impedance probe kit

Frequency:  $\leq 120$  MHz  
Maximum Voltage:  $\pm 42$  V peak max.  
(AC+DC)  
Probe cable length: 1.5 m  
Use with only E4990A-120

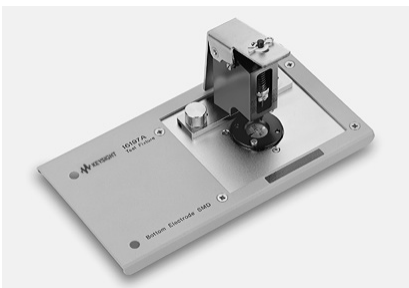
## Test Fixtures and Accessories (7-mm Terminal)

### RF SMD/chip components



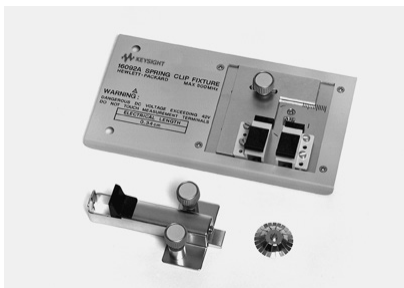
16196A/B/C/D SMD test fixture

Coaxial fixture for parallel  
electrode SMDs.  
Frequency: dc to 3 GHz  
Maximum Voltage:  $\pm 42$  V peak max.  
(AC+DC)  
Applicable SMD size:  
16196A: 1.6 mm x 0.8 mm  
16196B: 1.0 mm x 0.5 mm  
16196C: 0.6 mm x 0.3 mm  
16196D: 0.4 mm x 0.2 mm



16197A bottom-electrode SMD  
test fixture

Frequency: dc to 3 GHz  
Maximum Voltage:  $\pm 42$  V peak max.  
(AC+DC)  
Applicable SMD size: from 1005 (mm)/  
0402 (inch) to 3225 (mm)/1210 (inch).  
Accommodation of the 0603  
(mm)/0201 (inch) size is available with  
Option 001.



16092A axial, radial, and SMD test  
fixture

Frequency:  $\leq 500$  MHz  
Maximum Voltage:  $\pm 42$  V peak max.  
(AC+DC)



16198A bottom-electrode SMD test fixture

Frequency: dc to 3 GHz  
Maximum Voltage:  $\pm 42$  V peak max. (AC+DC)  
Applicable SMD size: 0201 (mm)/008004  
(inch) and 0402 (mm)/01005 (inch).